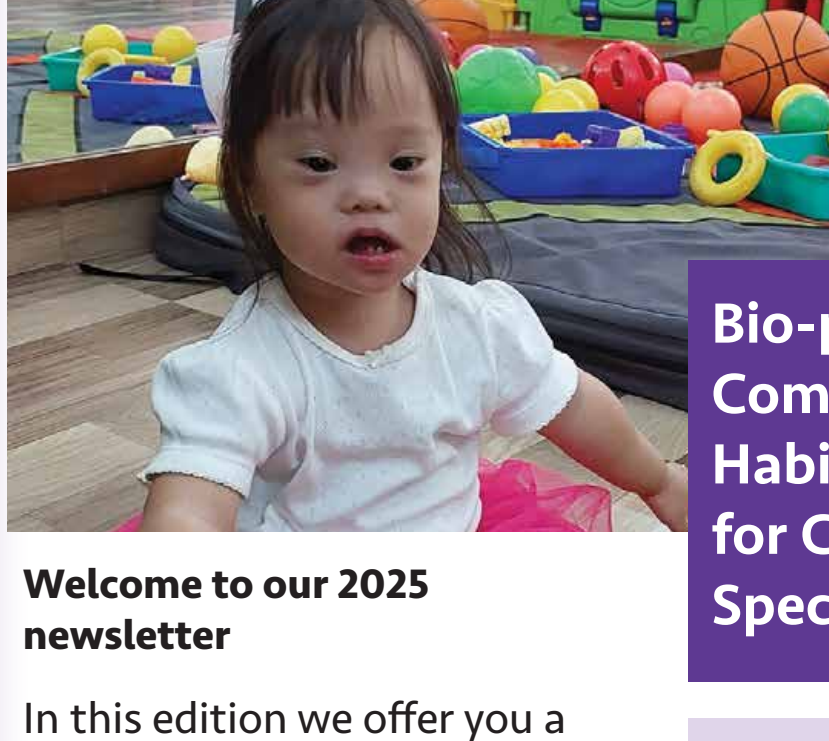
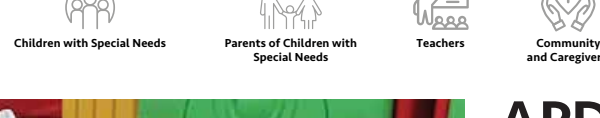


# EARLY INTERVENTION

## WHO WE WORK WITH



## APD's Early Intervention Programme – 2025 Edition

### Bio-psychosocial Comprehensive Habitation Program for Children with Special Needs (CwsNs)

#### Welcome to our 2025 newsletter

In this edition we offer you a glimpse into the lives we touch and the futures we help shape for children with developmental delays and disabilities.

For over 66 years, the Association of People with Disability (APD) has been a pillar of hope for families, especially those from disadvantaged backgrounds. Our **“Cradle to School”** initiative supports these children from infancy until they enter school, ensuring each child is well-prepared.

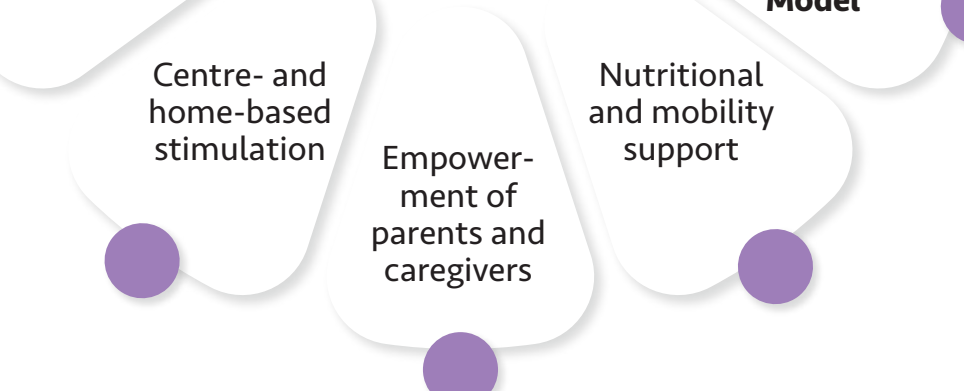
#### Our Vision: No Child Left Behind

Every child deserves joy, opportunity, and inclusion. The Early Intervention Programme is more than therapy — it unlocks potential, empowers families, and builds inclusive communities. We help all children, regardless of ability or background, to grow, learn, and become productive.

#### Why Early Intervention Matters

**90%** of a child's brain develops before the age of five making early support crucial.

#### To help, we offer:



#### Our approach is holistic and adapted to local needs:

##### Centre-based Care:

Daily intervention and parent training at centres in Bengaluru, Belagavi, Bijapur, and Chitradurga.

##### Sub-centres:

Therapy and screening via Anganwadis, PHCs, and Namma Clinics in rural areas.

##### Home Visits:

For children with severe disabilities or limited mobility.

##### Tele-rehabilitation:

Online sessions for children in remote areas.

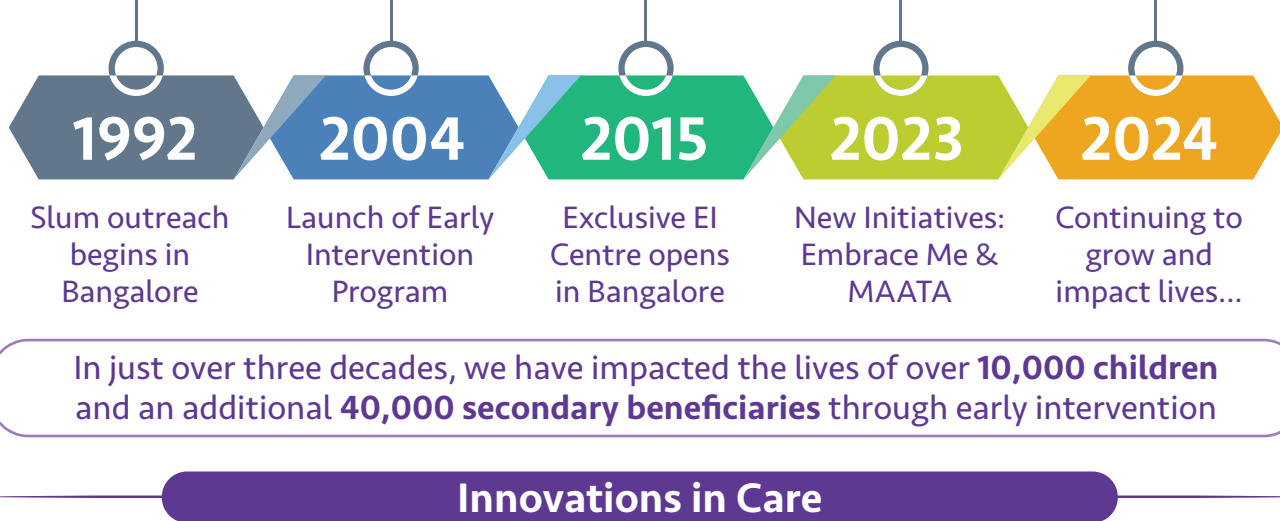
##### Camp-based Services:

Community-level screening and awareness initiatives.

*Together, these services ensure that every child, everywhere, gets the care they deserve.*

#### Our Growth: A Testament to Change

Since our inception, we have made remarkable strides in implementing our mission:



In just over three decades, we have impacted the lives of over **10,000 children** and an additional **40,000 secondary beneficiaries** through early intervention

#### Innovations in Care

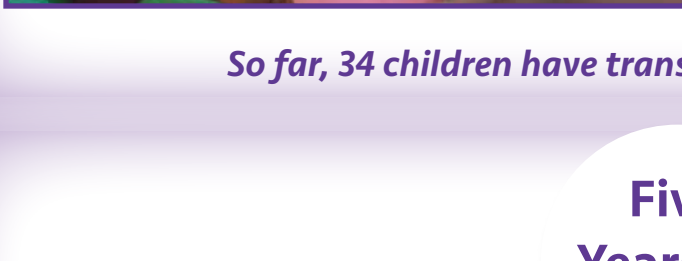
##### MAATA – Mothers as Therapists

Based on the principle that children learn best in familiar environments, our MAATA program trains mothers to deliver therapy at home. In the pilot, 30 mothers supported not only their own children but also helped identify other children in need. We aim to train **8,000 mothers**, creating a community-led care model that is both sustainable and empowering.



##### Embrace Me – Autism Clinic

This clinic takes a holistic, play-based, school-readiness approach, focusing on happiness, growth, and inclusion for children with autism.

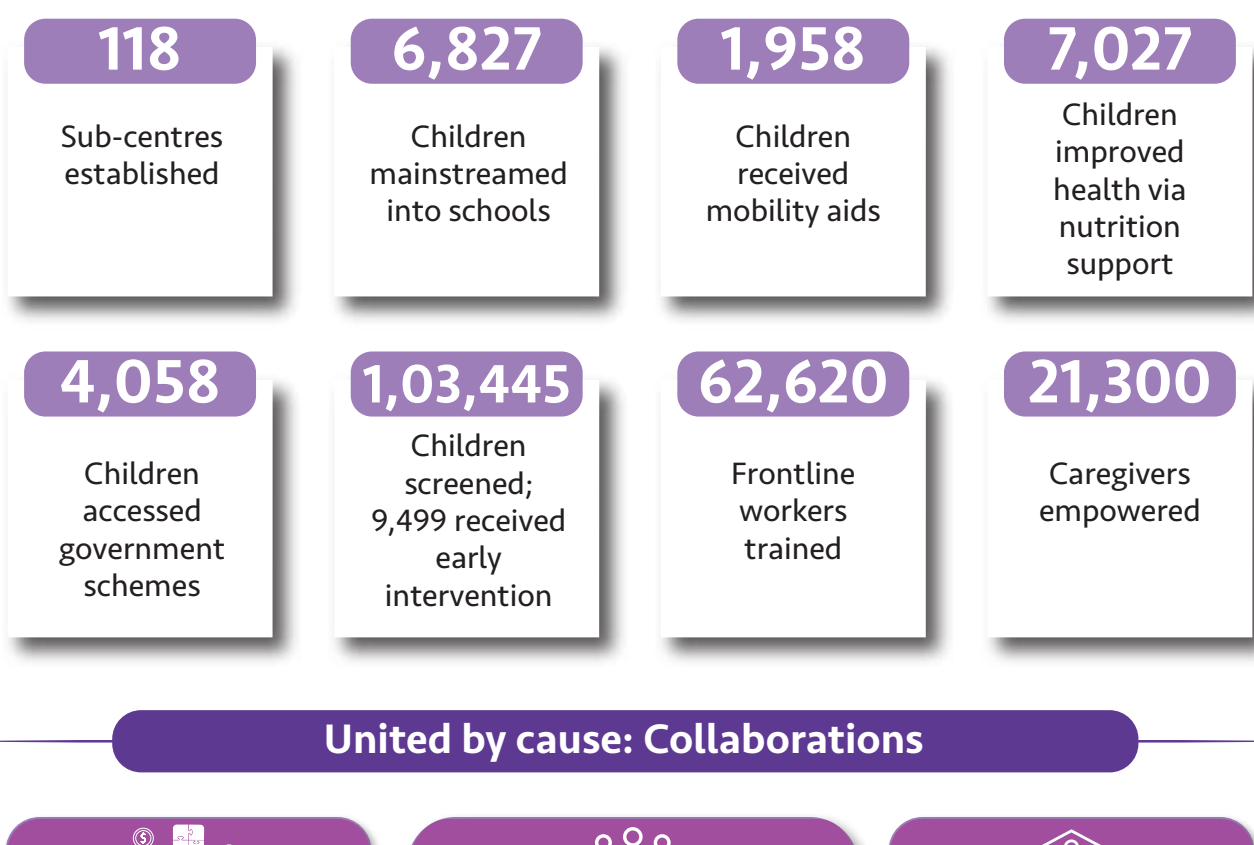


##### Key modalities include:

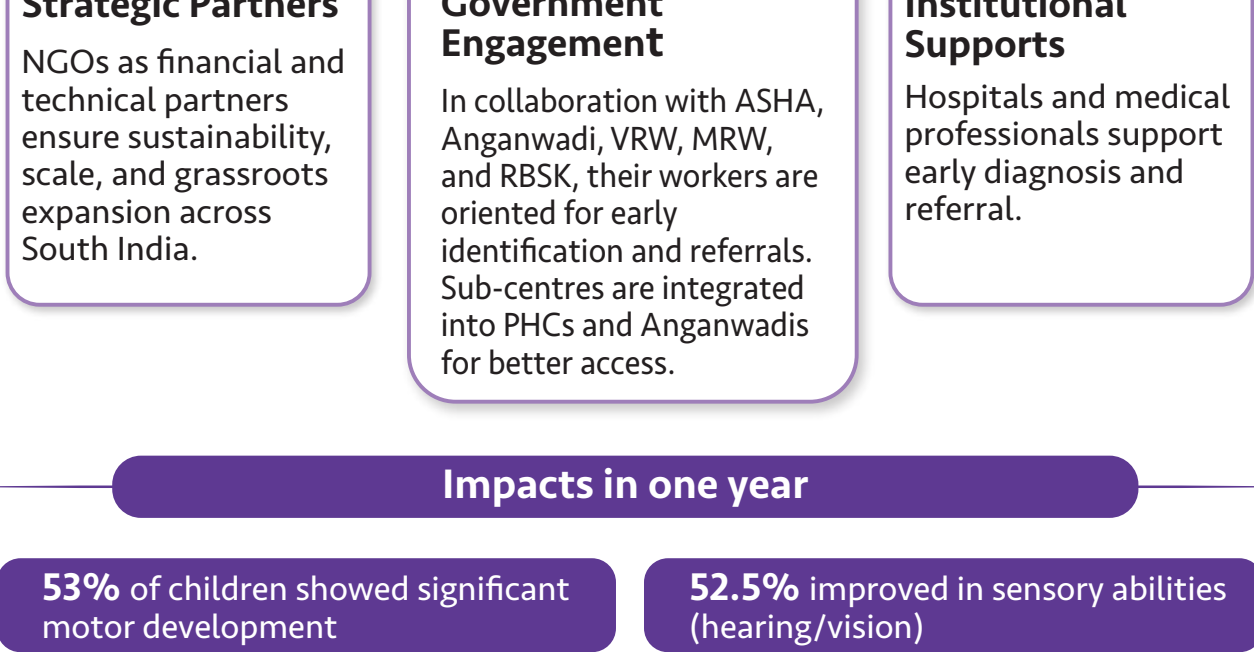


*So far, 34 children have transitioned into mainstream schools.*

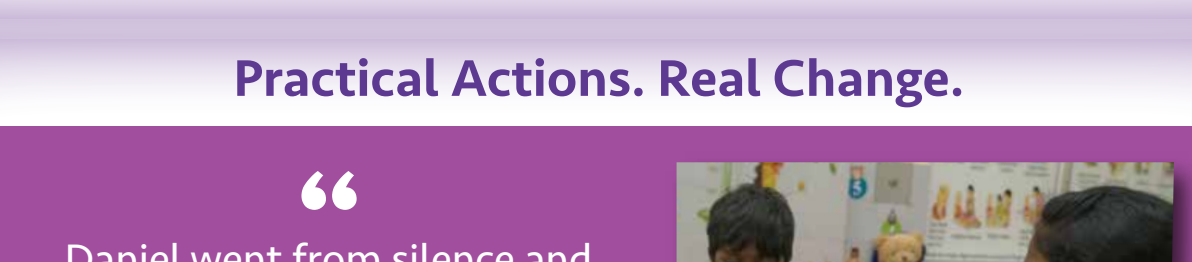
#### Five Years of Impact



#### United by cause: Collaborations

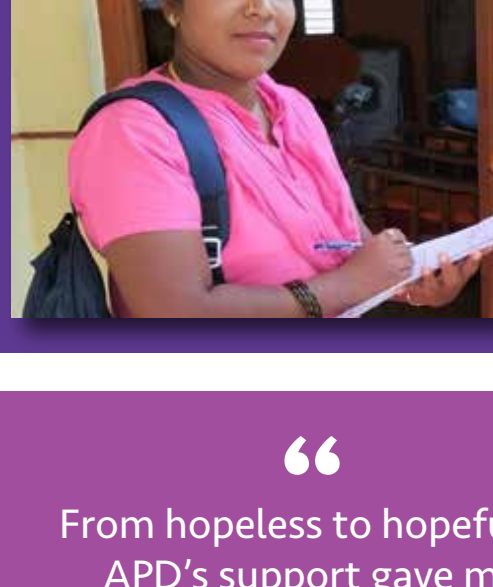


#### Impacts in one year



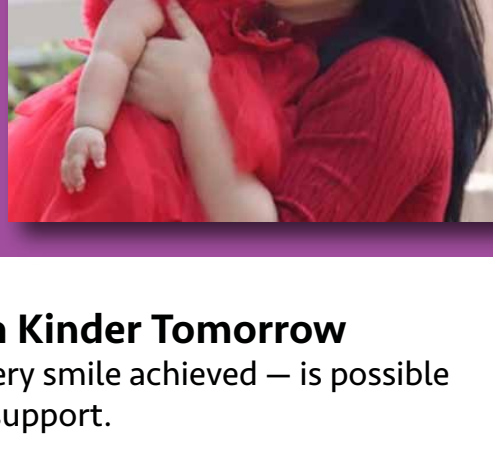
#### Practical Actions. Real Change.

“Daniel went from silence and struggle to walking on his own and speaking his first words. APD added meaning to his as well as our lives.”  
— Priyanka, mother of Daniel



“As an ASHA worker, I've seen many programs. But APD's Early Intervention is a true blessing for the poorest families.”  
— Sandhya

“From hopeless to hopeful — APD's support gave me strength as a mother of a child with Down syndrome.”  
— Ingoneule, mother of Zaiyile Angel



#### Together, We're Building a Kinder Tomorrow

Every small step, every word spoken, every smile achieved — is possible because of your support.

Our donors, partners, staff, and friends, we wholeheartedly thank you

We urge you too to – Join us. Support us. Spread the word.

**Let's ensure no child is left behind.**

#### Say Yes To Access

Feel inspired to contribute? Just say **#YestoAccess**

The "Yes to Access" project aims to create an inclusive society where persons with disabilities can participate equally. Focusing on Built, Mobility, and Digital Accessibility, it seeks to improve visibility and drive change, ensuring a more accessible environment for all. In the last one and a half year, The Accessibility information of **3000+ location points** have been collected that will be publicly available on a map layer.



As we embrace these endeavours, APD remains committed to creating an inclusive and accessible society for all.

#### The Association Of People With Disability (APD)

6th Cross Hutchins Road, Off Hennur Road, Lingarajapuram, St Thomas Town Post, Bangalore, Karnataka 560 084. Phone: (+91 80) 2547 5165, Email: [contact@apd-india.org](mailto:contact@apd-india.org) [www.apd-india.org](http://www.apd-india.org)

**Thank you for your continued support! Together, we can make a difference!**

#### Our Donors

